



MODEL SLX400C GRAVITY SOFT SERVE FREEZER

FEATURES

Designed to streamline your operations and ensure consistent, high-quality results; this countertop freezer serves smooth, creamy, and consistent yogurt, ice cream, custard, or sorbet every time.

Meets ADA Specifications

Making self-service applications accessible for all customers.

Twist Feature

Dispenses two separate flavors or an equal combination of both, providing versatile menu options and enhancing your product offerings.

Precision Control

The Virtual Quality Management System™ monitors temperature to ensure superior taste and quality.

Compact, Space-Saving Design

A perfect fit for any foodservice operation.

Long Lasting Scraper Blades

Durable reversible scraper blades minimizes replacements while ensuring a smooth, consistent texture for premium-quality frozen treats.

Innovative Auger Technology

Gently blends for optimal texture and consistency.

Standby Mode

Reduces energy costs while maintaining safe product storage during non-business hours.



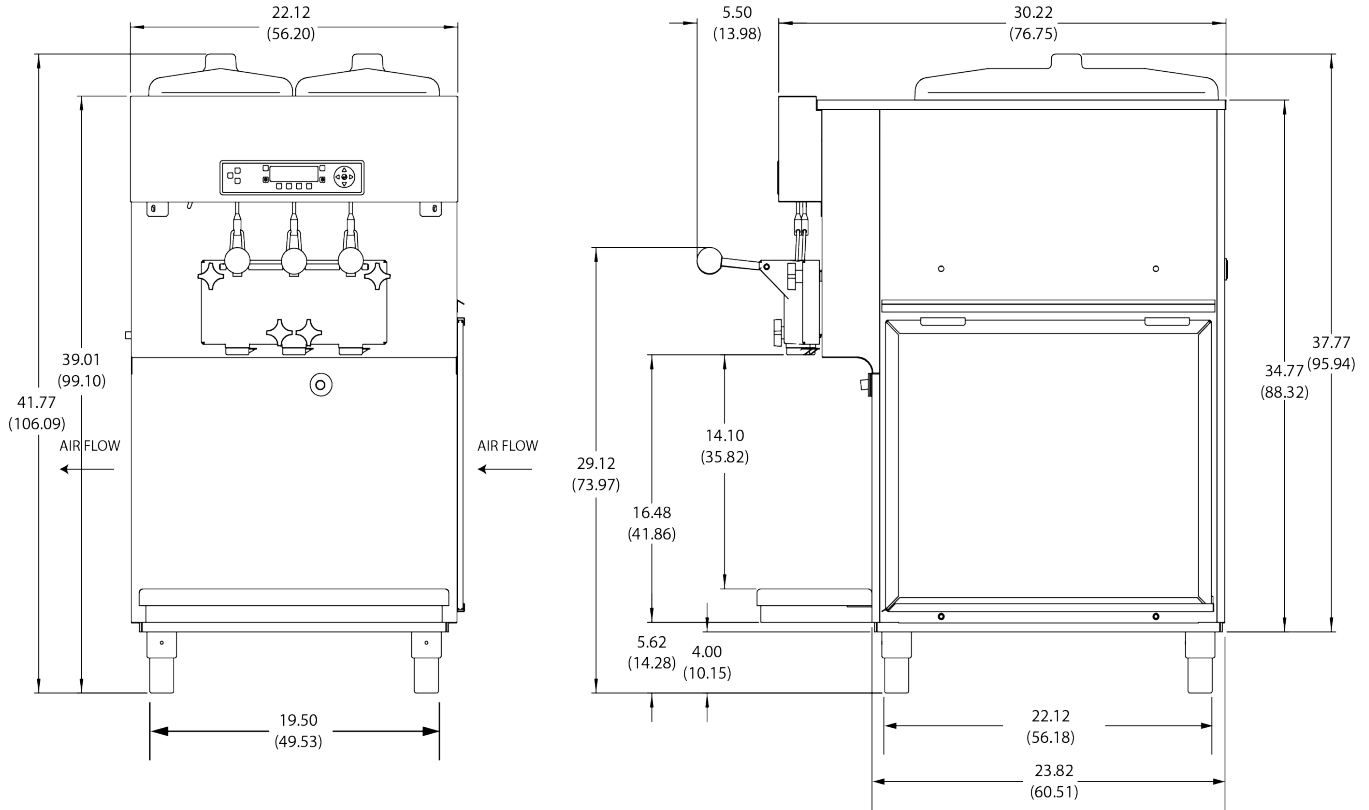
PERFECT FOR

- High-Volume Cafeterias
- Quick Service Restaurants
- Retirement Villages
- Frozen Yogurt Shops





MODEL SLX400C SPECIFICATIONS



Weight

Net	420 lbs	190.5 kg
Crated	500 lbs	226.79 kg

Volume

15 cubic ft	0.43 cubic m
-------------	--------------

Dimensions

22.12" x 30.22" x 41.77"
56.2cm x 76.75cm x 106.09cm

Mix Hopper Capacity

Two - 12 qts (11.4 liters) each

Freezing Cylinder Capacity

Two - 2.7 qts (2.6 liters) each

Beater Motor- Qty, hp

Two , 1 hp

Refrigerant Types*

One, 6,900 Btuh
R404a R452a

Electrical

	Max Fuse Size	NEMA Plug Type	
208-230/60/1 Air	20 A	6-20 P	
	Total Amps (qty)	kW	Poles (P) Wires(W)
220-240/50/1 Air	12.5	3.2	2P 3W

Exterior Space Required

Air Cooled: 6" (15.2 cm) air space required on both sides OR 12" (30.48 cm) on the left panel and 3" (7.62 cm) on the right panel for circulation. Open at the top

Certified and/or listed by:



*UL listed and listed by Underwriters Laboratories under Candian National Standard C22.2 No. 120-13

*Customer is responsible for complying with local refrigeration regulations.

