



# MODEL GEN-85 PRESSURIZED SHAKE FREEZER

## FEATURES

Seamlessly blends syrups of your choice into a shake base while it is dispensed while delivering a premium product.

### 5 Flavor Options

Easily infuse flavor and adjust consistency at the press of a button.

### Patented Mix Transfer System

The simplest and most reliable pressurized system available for consistent product flow.

### Flexible Mix Holding System

Pumps directly from bags or mix containers for seamless operation.

### Long Lasting Scraper Blades

Durable reversible scraper blades minimizes replacements while ensuring a smooth, consistent texture for premium-quality frozen treats.

### Precision Control

The Virtual Quality Management System™ monitors temperature to ensure superior taste and quality.

### Scroll Compressor Technology

Increases capacity, reliability, and efficiency; making your operation more efficient and cost-effective.

### Innovative Auger Technology

Maintains optimal texture by gently blending and reducing agitation.

### Exclusive Mixer Design

Simultaneously dispense and blend in flavorings; reducing servicing times, improving efficiency, and ensuring consistency.

### Optional Remote Flavor Pumps

Store syrup jugs up to 15 ft away while mounting the pump box under a cabinet.



## PERFECT FOR

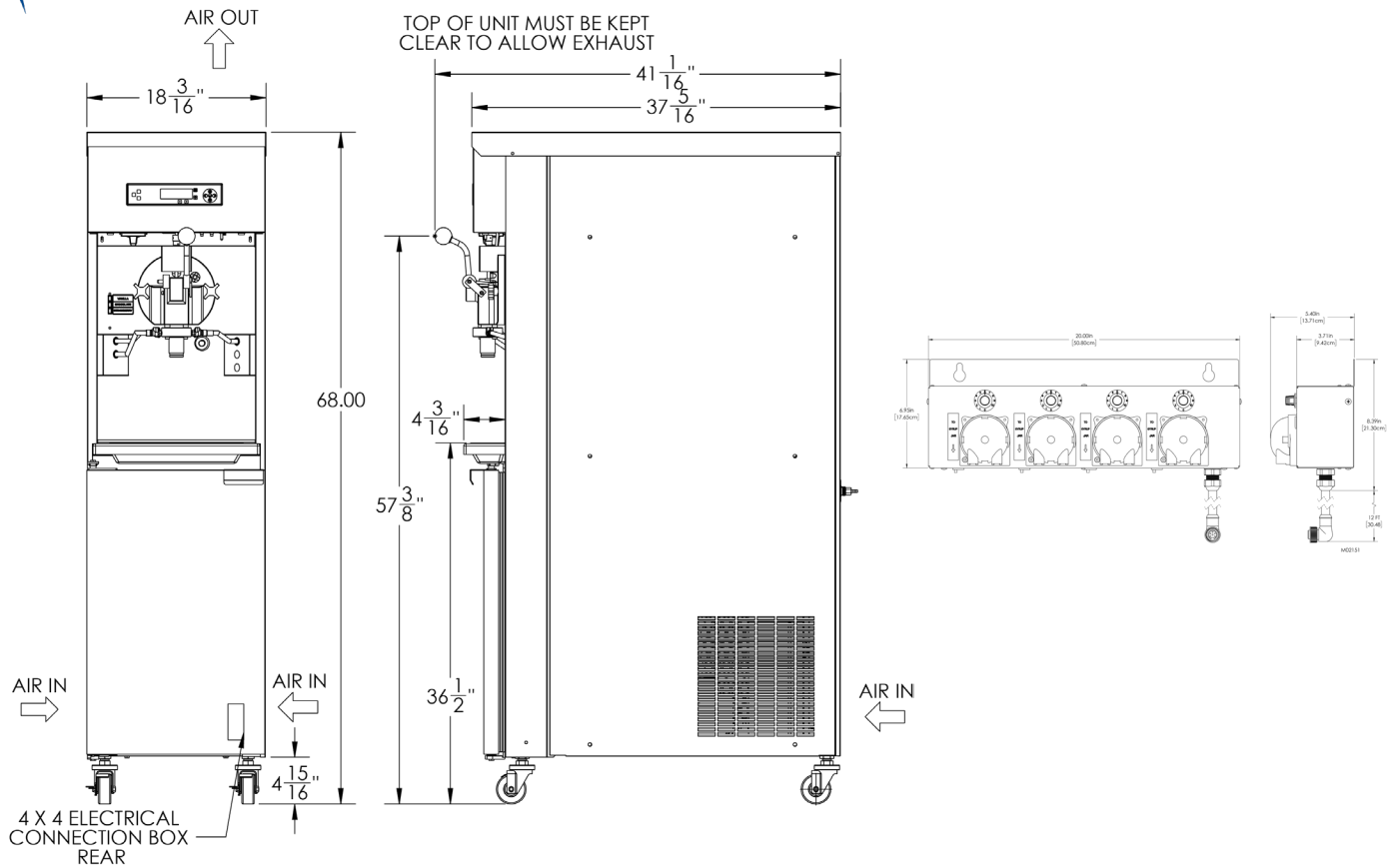
- Quick-Service Restaurants
- Frozen Treat Shops



GEN-85



# MODEL GEN-85 SPECIFICATIONS



## Weight

Net	530 lbs	240 kg
Crated	631 lbs	286 kg

## Volume

58.42 cubic ft	1.65 cubic m
----------------	--------------

## Dimensions

18-3/16" x 37-5/16" x 68"
46.2 cm x 92.2 cm x 172.72 cm

## Freezing Cylinder Capacity

One - 10.5 qts (9.9 liters) each

## Mix Capacity

One - 28 qts (26.5 liters) each

## Refrigerant Types\*

One, 10,000 Btuh  
R404a      R452a

## Separate Cabinet Refrigerant

One, 1200 Btuh  
R134a

## Electrical

	Max Fuse Size	Min Circuit Ampacity	Poles (P) Wires(W)
208-230/60/1 Air	30	24.5	2P, 2W
208-230/60/1 Water	30	23	2P, 2W
208-230/60/3 Air	20	17.5	3P, 3W
209-230/60/3 Water	20	16	3P, 3W
	Total Amps (qty)	kW	Poles (P) Wires(W)
380-415/50/3 Air	11.5	4.5	3P, 4W

## Exterior Space Required

**Water Cooled :** 3" (7.6 cm) air space required on both sides & rear panel for circulation

**Air Cooled :** 6" (15.3 cm) air space required on both sides & rear panel for circulation

## Optional Features

**Multiple Types of Blades:** provides desired consistencies from smooth creamy shakes to thick hand-spun shakes.

Certified and/or listed by:



\*UL listed and listed by Underwriters Laboratories under Canadian National Standard C22.2 No. 120-13

## DISTRIBUTOR



\*Customer is responsible for complying with local refrigeration regulations.