



# MODEL CS600 GRAVITY SOFT SERVE FREEZER

## FEATURES

**This powerful, single-flavor soft serve freezer is designed for efficiency, reliability, and seamless operation.**

### Versatile Menu

Serve quality soft serve, custards, yogurts, and sorbets at a high-capacity.

### Easy to Operate and Clean

Designed for reliability to minimize downtime.

### Precision Consistency Control

Designed to dispense quality product consistently.

### Washable Air Filter

Keeps the condenser clean for optimal performance.

### Compact, Space-Saving Design

A perfect fit for any foodservice operation.

### Innovative Auger Technology

Gently blends to preserve texture, consistency, and quality.

### Long Lasting Scraper Blades

Durable reversible scraper blades minimizes replacements while ensuring a smooth, consistent texture for premium-quality frozen treats.

### Standby Mode

Reduces energy costs while safely holding product during non-business hours.



**Optional Cart**



## PERFECT FOR

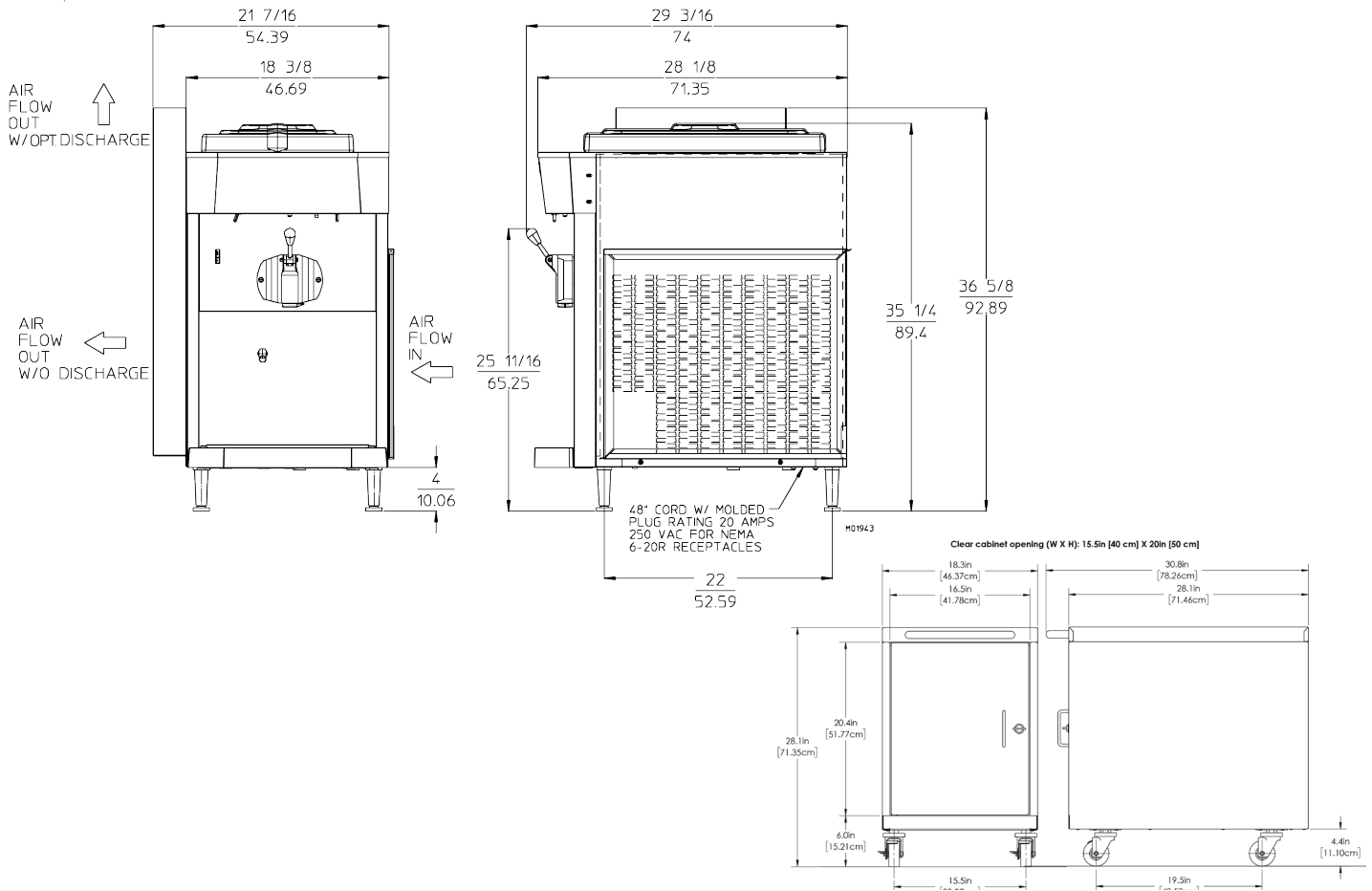
- Convenience Stores
- Coffee Shops
- Ice Cream Stores
- Burger Restaurant
- Diners
- Kiosks



CS600



# MODEL CS600 SPECIFICATIONS



## Weight

Net	260 lbs	117.9 kg
Crated	386 lbs	175.1 kg

## Volume

39.5 cubic ft	1.2 cubic m
---------------	-------------

## Dimensions

21-7/16" x 28-1/8" x 36-5/16"
54.39cm x 74cm x 92.89cm

## Mix Hopper Capacity

One - 20 qts (18.8 liters) each

## Freezing Cylinder Capacity

One - 3.7 qts (3.5 liters) each

## Beater Motor- Qty, hp

One, 1.5hp

## Refrigerant Types\*

One, 9500 Btuh
R404a      R452a

\*Customer is responsible for complying with local refrigeration regulations.

## Electrical

	Max Fuse Size	NEMA Plug Type	
208-230/60/1 Air	20	6-20 P	
209-230/60/1 Water	20	6-20 P	
	Total Amps (qty)	kW	Poles (P) Wires(W)
220-240/50/1 Air	12	1.78	2P 2W

## Exterior Space Required

**Air Cooled:** 3" (7.6 cm) air space required on both sides & rear panel for circulation

## Optional Features

**Top Air Discharge Chute:** allows air flow to divert upward

**Cabinet:** commercial grade stainless steel with heavy duty casters, a sturdy latch and 6 cubic feet of storage

Certified and/or listed by:



\*UL listed and listed by Underwriters Laboratories under Canadian National Standard C22.2 No. 120-13

\*\*Selected voltages only. Contact Electro Freeze® / H.C. Duke to verify agency needs



DISTRIBUTOR

