



MODEL B24V

26 QUART BATCH FREEZER

FEATURES

Designed for high-volume production, this large-capacity batch freezer delivers premium-quality ice cream, gelato, sorbet, Italian ice, or sherbet with unmatched consistency.

Patented Variable Speed Overrun & Viscosity Control

Maximizes profitability with precise control over viscosity and overrun, delivering a consistently high-quality product. The automatic shutoff feature ensures optimal texture every time.

Cam Door Latch

Easily provides interior access for efficient operation.

Exclusive Auger and Dispensing Door Design

Ensures excellent product extraction while minimizing flavor overlap, delivering a smooth, high-quality frozen treat with every batch.

Superior Product Quality

Electro Freeze®'s signature design guarantees unmatched consistency and texture; producing premium frozen desserts.

Built-in Faucet with Flex Hose

Streamlines cleaning with a convenient, flexible hose; reducing downtime and ensuring hygienic operation.

Digital Timer with Audible Alarm

Enhances workflow efficiency by providing precise timing alerts to ensure perfect batch consistency with every cycle.

Extra-Large Discharge Chute & Oversized Feed Hopper

Speeds up dispensing for consistent overrun while allowing for easier ingredient loading, supporting high-volume production and operational efficiency.



PERFECT FOR

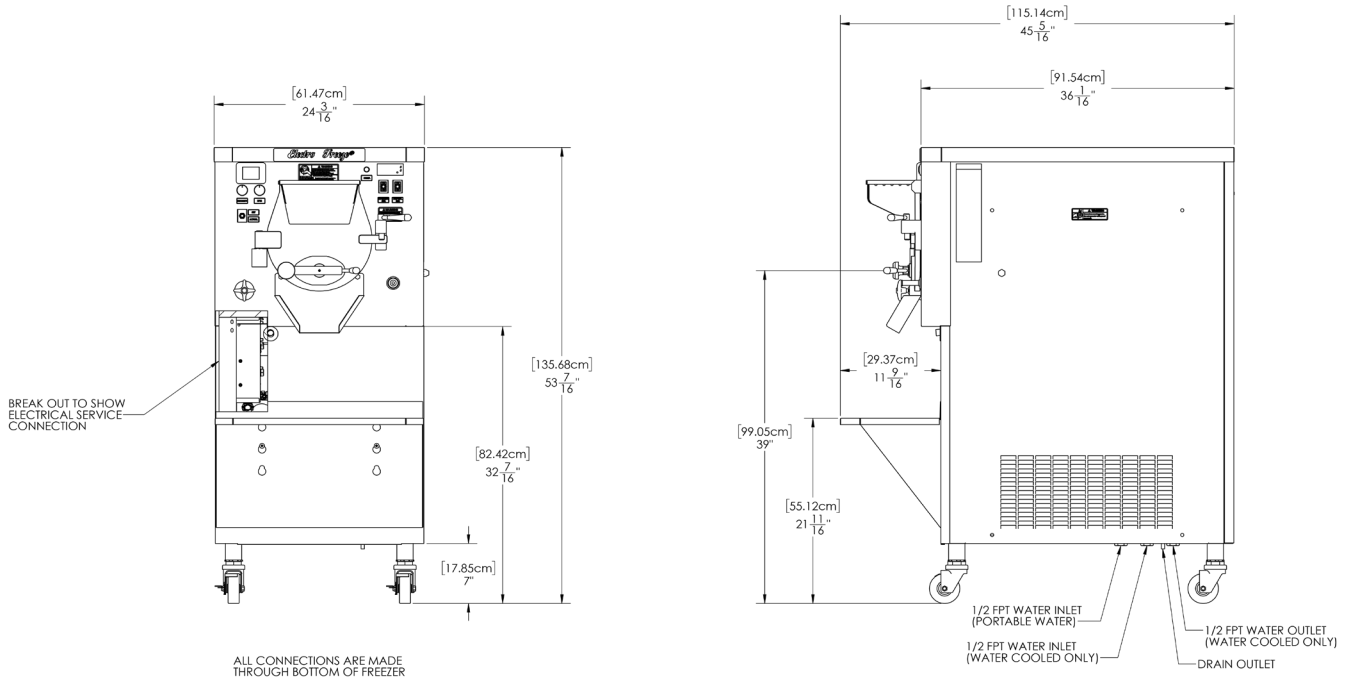
- Ice Cream Shops
- Custard Stands
- Gelato Shops
- Water Ice/ Italian Ice



B24V



MODEL B24V SPECIFICATIONS



Weight

Net	790 lbs	358.3 kg
Crated	880 lbs	399.2 kg

Volume

58.42 cubic ft 1.65 cubic m

Dimensions (Air)

24-3/16" x 45-5/16" x 53-7/16"
61.47cm x 115.14cm x 135.68cm

Dimensions (Water)

24-3/16" x 45-5/16" x 53-7/16"
61.47cm x 115.14cm x 135.68cm

Freezing Cylinder Capacity

One - 26 qts (24.6 liters)

Refrigerant Types*

One - 24,400 Btuh
R404a R452a

Beater Motor

One - 5 hp (3.73 kW)

*Customer is responsible for complying with local refrigeration regulations.

Electrical

	Max Fuse Size	Min Circuit Ampacity	Poles (P)	Wires(W)
208-230/60/3 Air	50	35	3P,	3W
208-230/60/3 Water	45	33.5	3P,	3W

Exterior Space Required

Air/Water Cooled : 3" (7.6 cm) required on both side panels and 6" (15.24 cm) on rear for circulation

Water Cooled : Water pressure between 35-140 psig (241-965 kPa) for operation

Optional Features

Top Air Discharge Chute: allows air flow to divert upward

Cerified and/or listed by:



*UL listed and listed by Underwriters Laboratories under Candian National Standard C22.2 No. 120-13

