



# MODEL B12V

## 12 QUART BATCH FREEZER

### FEATURES

Designed for medium-volume production, this batch freezer delivers premium-quality ice cream, gelato, sorbet, Italian ice, or sherbet with unmatched consistency.

#### Patented Variable Speed Overrun & Viscosity Control

Maximizes profitability with precise control over viscosity and overrun, delivering a consistently high-quality product. The automatic shutoff feature ensures optimal texture every time.

#### Cam Door Latch

Easily provides quick interior access for efficient operations.

#### Exclusive Auger and Dispensing Door Design

Ensures excellent product extraction while minimizing flavor overlap; delivering a smooth, high-quality frozen treat with every batch.

#### Superior Product Quality

Electro Freeze®'s signature design guarantees unmatched consistency and texture; producing premium frozen desserts.

#### Built-in Faucet with Flex Hose

Streamlines cleaning with a convenient, flexible hose; reducing downtime and ensuring hygienic operation.

#### Digital Timer with Audible Alarm

Enhances workflow efficiency by providing precise timing alerts; ensuring perfect batch consistency with every cycle.

#### Extra-Large Discharge Chute & Oversized Feed Hopper

Speeds up dispensing for consistent overrun while allowing for easier ingredient loading, supporting high-volume production and operational efficiency.



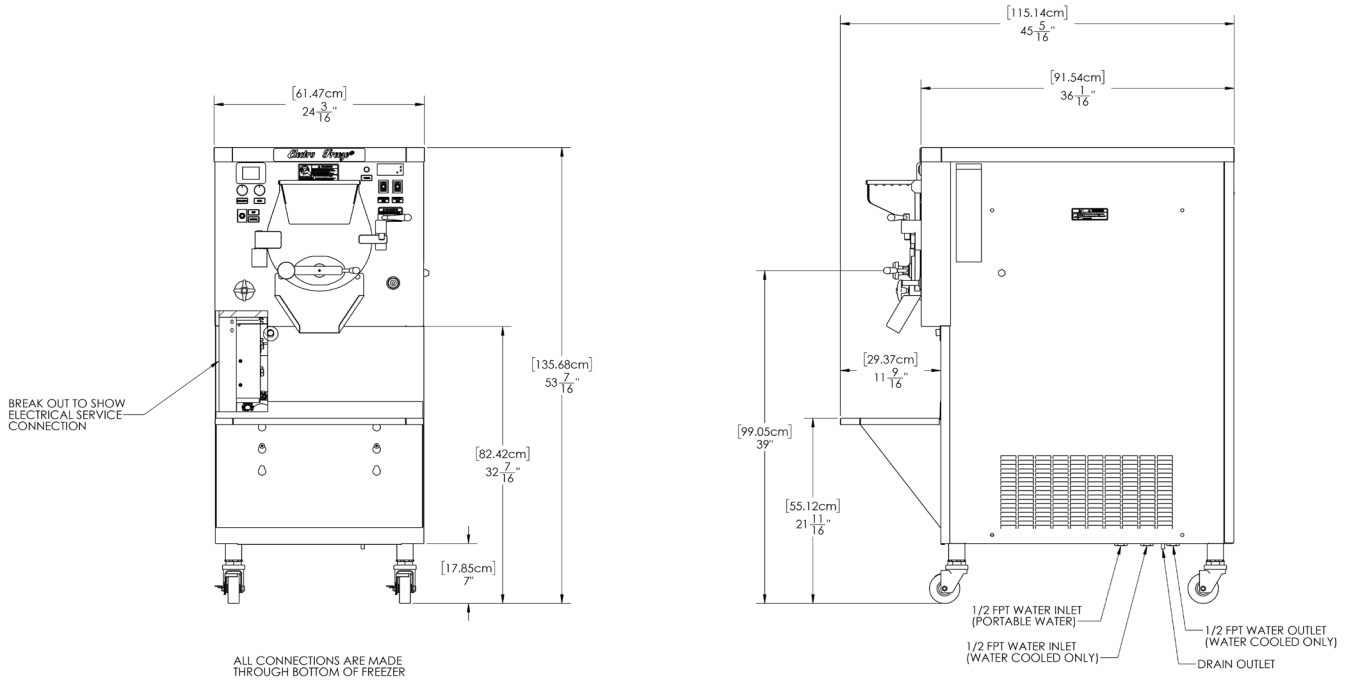
### PERFECT FOR

- Ice Cream Shops
- Custard Stands
- Gelato Shops
- Water Ice/ Italian Ice





# MODEL B12V SPECIFICATIONS



## Weight

Net	655 lbs	297.1 kg
Crated	745 lbs	337.9 kg

## Volume

58.42 cubic ft	1.65 cubic m
----------------	--------------

## Dimensions (Air)

24-3/16" x 45-5/16" x 53-7/16"

61.47cm x 115.14cm x 135.68cm

## Dimensions (Water)

24-3/16" x 45-5/16" x 53-7/16"

61.47cm x 115.14cm x 135.68cm

## Freezing Cylinder Capacity

One - 14 qts (13.25liters)

## Refrigerant Types\*

One, 19,000 Btuh

R404a                      R452a

## Beater Motor

One - 2.5 hp (1.9 kW) /

One 2 hp (1.47 kW)

## Electrical

	Max Fuse Size	Min Circuit Ampacity	Poles (P)	Wires(W)
208-230/60/1 Air	35	25.5	2P,2W	
208-230/60/1 Water	35	24.5	2P,2W	
208-230/60/3 Air	25	19.5	3P, 3W	
208-230/60/3 Water	25	18	3P, 3W	

## Exterior Space Required

**Air/Water Cooled :** 3" (7.6 cm) required on both side panels and 4" (10.16 cm) for circulation

**Water Cooled :** Water pressure between 35-140 psig (241-965 kPa) for operation

Certified and/or listed by:



\*UL listed and listed by Underwriters Laboratories under Candian Naitonal Standard C22.2 No. 120-13

\*\*Selected voltages only. Contact Electro Freeze® / H.C. Duke to verify agency needs

**DISTRIBUTOR**



**LOCATOR**



\*Customer is responsible for complying with local refrigeration regulations.