



MODEL 877HB & 877HBRH

GRAVITY SLUSH & FROZEN BEVERAGE FREEZER

FEATURES

This high-performance, medium-volume, countertop frozen cocktail machine designed for fast, and easy service; helping operators deliver consistently smooth, premium-quality frozen beverages.

Easy to Operate and Clean

Designed for reliability minimize downtime.

Innovative Auger Technology

Gently blends to preserve texture, consistency, and quality

Long Lasting Scraper Blades

Our durable scraper blades minimize replacements while ensuring a smooth, consistent texture for high-quality frozen treats.

Compact, Space-Saving Design

A perfect fit for any foodservice operation.

Optional Refrigerated Hopper

(Model BRH) Perfect for serving perishable ingredients.

Optional Flavor Rack

Holds 5 bottles to provide flavor options while running a neutral or core base.



PERFECT FOR

- Nightclubs
- Bars
- Quick-Service Restaurants
- Taquerias
- Mexican Restaurants

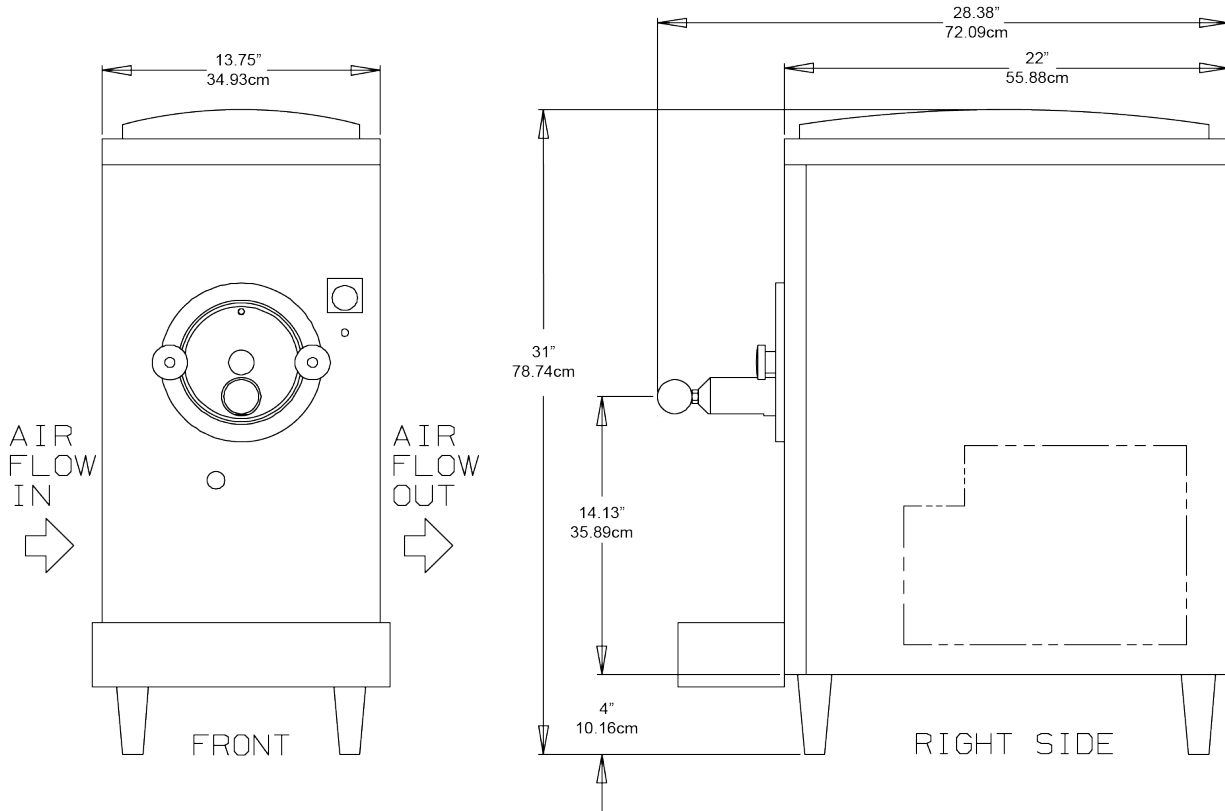


877HB & 877HBRH





MODEL 877HB & 877HBRH SPECIFICATIONS



M00267

Weight

Net	210 lbs	95 kg
Crated	245 lbs	111 kg

Volume

20.53 cubic ft	0.58 cubic m
----------------	--------------

Dimensions

13.75" x 22" x 31"
34.93cm x 55.88cm x 78.74cm

Mix Hopper Capacity

One - 20 qts (18.93 liters) each

Freezing Cylinder Capacity

One - 7.6 quarts (13.82 liters)

Beater Motor- Qty, hp

One, 1/4 hp

Refrigerant Types*

One, 5,700 Btuh
R404a R452a

*Customer is responsible for complying with local refrigeration regulations.

Electrical

	Max Fuse Size	NEMA Plug Type
115/60/1 Air	20A	5-20P
115/60/1 Water	20A	5-20P

Exterior Space Required

Air Cooled: 12" (30.5 cm) air space required on both sides & 6" (15.2cm rear panel for circulation

Optional Features

- Night Switch:** keeps product chilled and saves energy
- Refrigerated Hopper:** for perishable bases (order RH model)

Certified and/or listed by:



*UL listed and listed by Underwriters Laboratories under Candian National Standard C22.2 No. 120-13

DISTRIBUTOR



LOCATOR

