

## GES-5099

This pressurized, 2-flavor twist soft serve machine produces the highest quality, most consistent and profitable product you can serve. Ideal for operators that want to serve a high-quality product but don't require huge volume. This machine is perfect for co-branding concepts as well as college cafeterias, buffets and adding additional flavors to any shops.



**Multi-function LED Display**  
 with manager smart tools.

**Virtual Quality Management System™**  
 monitors Temperature and Consistency to provide superior taste and quality.

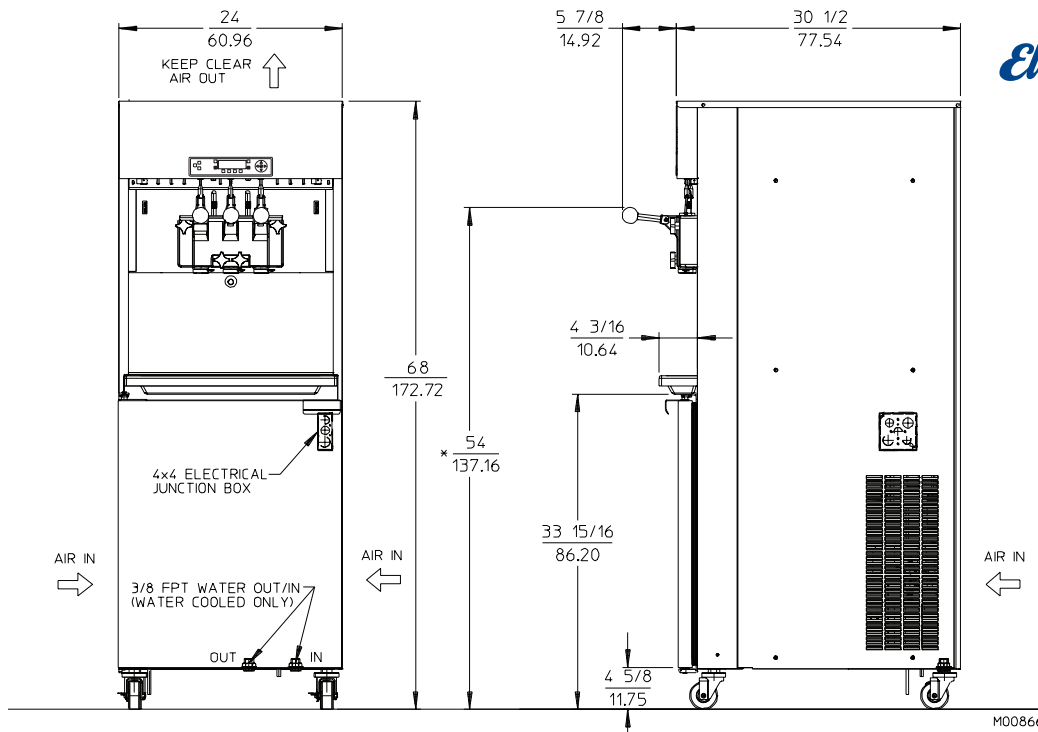
**Pump Forward Design**  
 New pump forward design reduces maintenance and cleaning time.



**Self Closing Spigots**  
 prevents the mess and eliminates waste.

**Scroll Compressor Technology**  
 provides increased capacity, reliability and efficiency.

**GES-5099 Soft Serve Freezer**



**MODEL GES-5099 SPECIFICATIONS**

Due to continual product improvements all specifications are subject to change without notice.

<b>Weights</b>	<b>lbs.</b>	<b>kgs.</b>	
Net	653	296	
Crated	755	343	
	<b>cu.ft.</b>	<b>cu.m.</b>	
Volume	58.42	1.65	
<b>Dimensions</b>	<b>in.</b>	<b>cm</b>	
Width	24	60.96	
Depth	30-1/2	77.54	
Height	68	172.72	
<b>Electrical</b>	<b>Maximum Fuse Size</b>	<b>Minimum Ampacity (Qty)</b>	<b>NEMA Plug Type</b>
208-230/60/1 Air	45	38.0	2P, 2W
208-230/60/1 Water	45	36.5	2P, 2W
208-230/60/3 Air	30	28	3P, 3W
208-230/60/3 Water	30	26.5	3P, 3W
	<b>Total Amps (Qty)</b>	<b>kW</b>	<b>Poles (P) Wires (W)</b>
400/50/3 Air	14.7	6.1	3P 4W
400/50/3 Water	13.3	5.8	3P 4W

Electrical characteristics other than above available on request from factory or local distributor. Check nameplate for exact electrical data.

**Bidding Spec**

Electrical: Volt \_\_\_\_\_ Hz \_\_\_\_\_ Ph \_\_\_\_\_  
 Cooling: \_\_\_\_\_ Neutral \_\_\_\_\_ Yes \_\_\_\_\_ No  
 Options: \_\_\_\_\_

**Electrical**

A dedicated electrical connection is required. Manufactured to be permanently connected. See electrical chart for the proper requirement. Consult your local electrical codes for cord and receptacle specifications.

**Beater Motor**

Two, 2hp.

**Refrigeration Systems**

One, 12,000 Btuh. R404a.  
 Separate Cabinet Refrigeration, One, 1000 Btuh, R134a. Btuh may vary depending on compressor used.

**Air Cooled**

For proper air circulation, unit requires 6" (15.2 cm) air space at rear panel or 6" side clearance with 1" back and 29" top clearance.

Arrange installation & repair through established distributors.

**Mix Capacity:** two tanks - 20 quarts (18.93 liters) each

**Freezing Cylinder Capacity:** two - 3.7 quarts (3.5 liters) each

Certified and/or listed by:



\*UL listed and listed by Underwriters Laboratories under Canadian National Standard C22.2 No. 120-13

**Electro Freeze div. of H.C. Duke & Son, LLC**  
 2116-8th Avenue, East Moline, Illinois 61244 USA  
 Phone (309) 755-4553 • (800) 755-4545  
 FAX (309) 755-9858  
 E-mail: sales@electrofreeze.com • www.electrofreeze.com

**Authorized Distributor**